



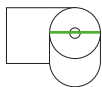
# Compact

Quick Start Guide

[clover.com/help](https://clover.com/help)



## Included

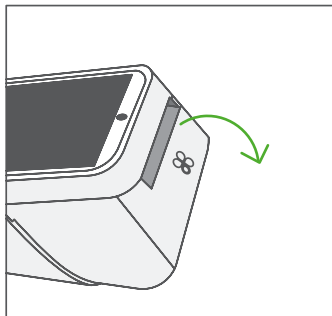


40 mm  
(1.5 in)

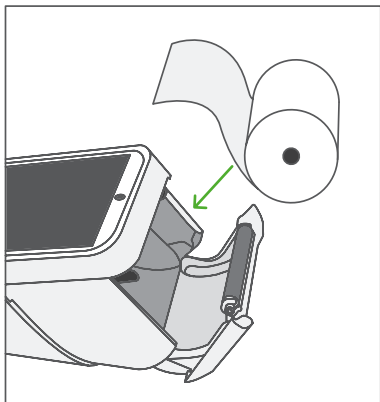


## Install printer roll

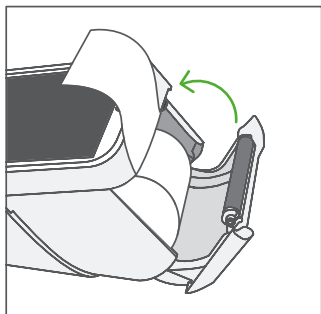
1



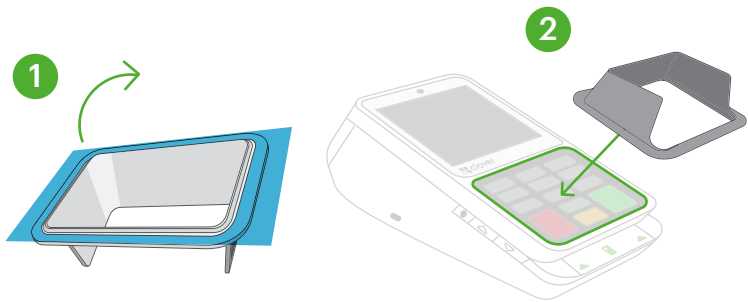
2



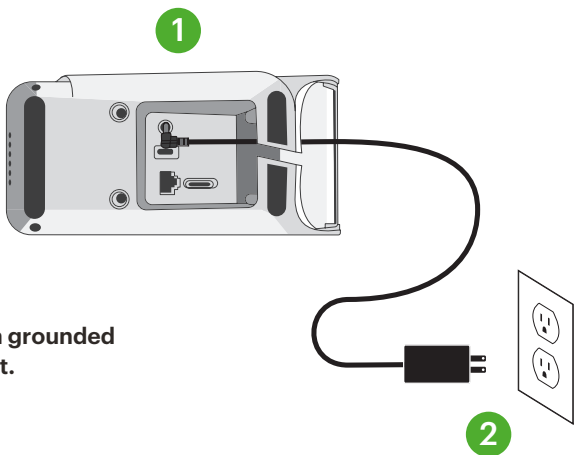
3



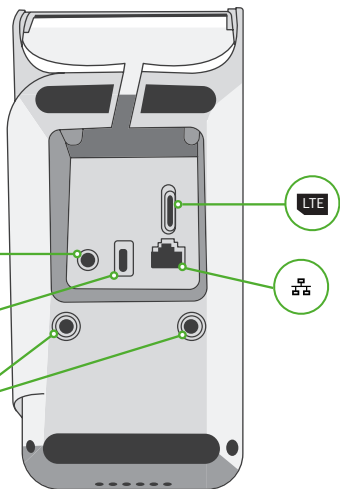
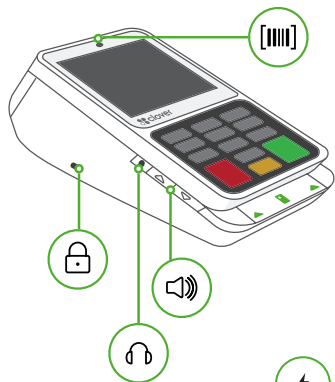
## Optional: Install PIN shield



## Power on



**Plug in last, to a grounded AC power outlet.**

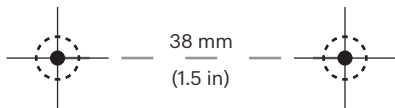


### Mounting Option

Metric thread: M6 x 1  
Depth: 8mm (5/16 in)



### Drilling Template



8 mm  
(5/16 in)

## **FCC Part 15**

This device complies with Part 15 of the FCC Rules. Operation is subject to the following two conditions: (1) This device may not cause harmful interference, (2) This device must accept any interference received, including interference that may cause undesired operation.

### **FCC Part 15 Class B-specific**

Note: This equipment has been tested and found to comply with the limits for a Class B digital device, pursuant to part 15 of the FCC Rules. These limits are designed to provide reasonable protection against harmful interference in a residential installation. This equipment generates, uses and can radiate radio frequency energy and, if not installed and used in accordance with the instructions, may cause harmful interference to radio communications. However, there is no guarantee that interference will not occur in a particular installation. If this equipment does cause harmful interference to radio or television reception, which can be determined by turning the equipment off and on, the user is encouraged to try to correct the interference by one or more of the following measures:

- Reorient or relocate the receiving antenna.
- Increase the separation between the equipment and receiver.
- Connect the equipment into an outlet on a circuit different from that to which the receiver is connected.
- Consult the dealer or an experienced radio/TV technician for help.

### **FCC Warning**

Changes or modifications not expressly approved by the party responsible for compliance could void the user's authority to operate the equipment. Operations in the 5.15-5.25GHz band are restricted to indoor usage only.

### **FCC exposure limit compliance statement**

This equipment complies with radio frequency (RF) exposure limits adopted by the Federal Communications Commission for an uncontrolled environment. This equipment should be installed and operated with minimum distance 20 cm between the radiator & your body.

## Clover Compact

Model Number: C801

### Patent

[clover.com/patents](https://clover.com/patents)

Clover Network, LLC  
415 N Mathilda Ave  
Sunnyvale, CA 94085, USA



### Waste Electrical and Electronic Equipment-WEEE

NOTE: This product is covered electronic equipment under the European Union's Waste from Electrical and Electronic Equipment ("WEEE") Directive (2012/19/EU). The WEEE Directive requires that covered equipment be collected and managed separately from typical household waste in all EU member states. Please follow the guidance of your local environmental authority or ask the shop where you purchased the product for collection or recycling options.



HDYJ8001010-3C